



EnterpriseIQ ShopData

Accurate Information and Production Reporting at the Source

ShopData Brings Manufacturing Data to the Shop Floor

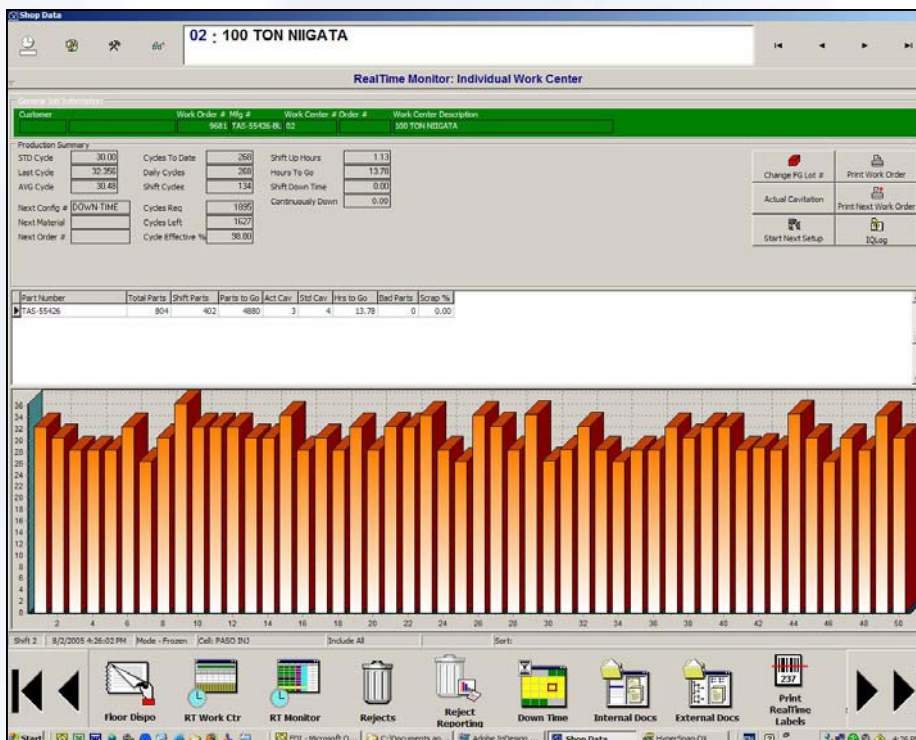
Created specifically for production and warehouse personnel, EnterpriseIQ ShopData provides a visual front end to the RealTime Production System. Using standard PC's or optional touch screen monitors, plant personnel can log into a work order on the shop floor, monitor and report production, view documents, enter SPC data, print labels, create PM work orders and more. Information is presented on an easy-to-read, full-screen display; larger controls are activated by the touch of a finger or the click of a mouse.

Affordable and easy to use, ShopData brings up-to-the-second information to those needing it most—the production staff—and puts it right where they need it—on the shop floor. Take advantage of its many links to the EnterpriseIQ core system and put real-time, accurate information in the hands of key decision makers on the plant floor.

BENEFITS

- Increase shop floor/production visibility
- Improve accuracy and timeliness of data entry from reporting production to quality inspections
- Eliminate wasteful reporting methodologies
- Lower cost of data acquisition
- Provide convenient access to terminals for clocking in/out of jobs and tasks
- Simplify data input with easy-to-use touch screen technology
- Reduce waste and paperwork handling

Multiple views are available showing real-time production information, including rates of production, good and scrap counts, next job and next material needs.



"ShopData has allowed our plant floor to become more accountable for data entry. The screens are simple enough for those employees who are not computer savvy."
-Donnelly Manufacturing

"Having ShopData allows data to be entered more regularly and more efficiently. This increases the accuracy of our scheduling and we get a clear view of where we stand production-wise and capacity-wise."
-Silcotech

EnterpriseIQ ShopData

Key Features

Production Reporting - Enter production information directly into ShopData and optionally relieve raw materials. Data can be entered by date, shift or work center for current or previously completed jobs.

RealTime Production Monitoring Access - Monitor production summary information for currently running items which allows you to identify production inefficiencies before they become a problem.

Reject and Downtime Reporting - Create rejected part entries and downtime records on the fly. Since either entry immediately affects the schedule, your capacity and timeliness information is more accurate.

Quick Inspections - Initiate quality inspections right from the ShopData screen. Input values and quickly analyze the process via graphic results.

Serialized Label Printing - Shop floor personnel can print labels directly from the ShopData screens, eliminating errors by printing the correct label every time.

Lot Numbers - Enhance the accuracy of information and improve lot traceability by making lot number changes directly from ShopData.

Documentation - ShopData provides easy access to both internal and external documents linked to the BOM, inventory item or customer; this can include process sheets, graphics, CAD drawings, pictures, videos and more.

Time Clock - From the production floor, employees can easily log in and out of jobs, reporting labor directly to project, production or maintenance orders. Optionally, ShopData allows log-out prompts for the user to provide parts produced information.

Documents pertaining to inventory items, bills of material or customers can be easily displayed, thus reducing paperwork on the plant floor.

